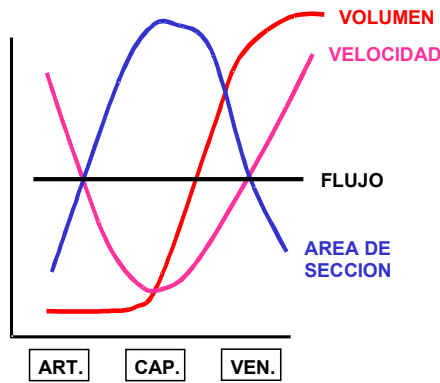
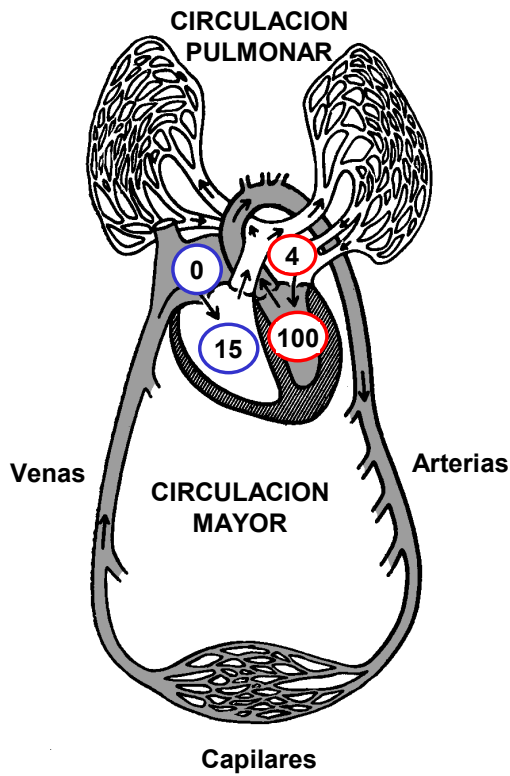
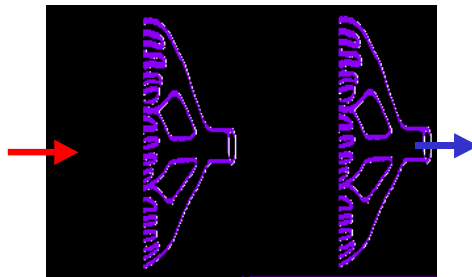


# Fisiología del aparato circulatorio. 1. Corazón

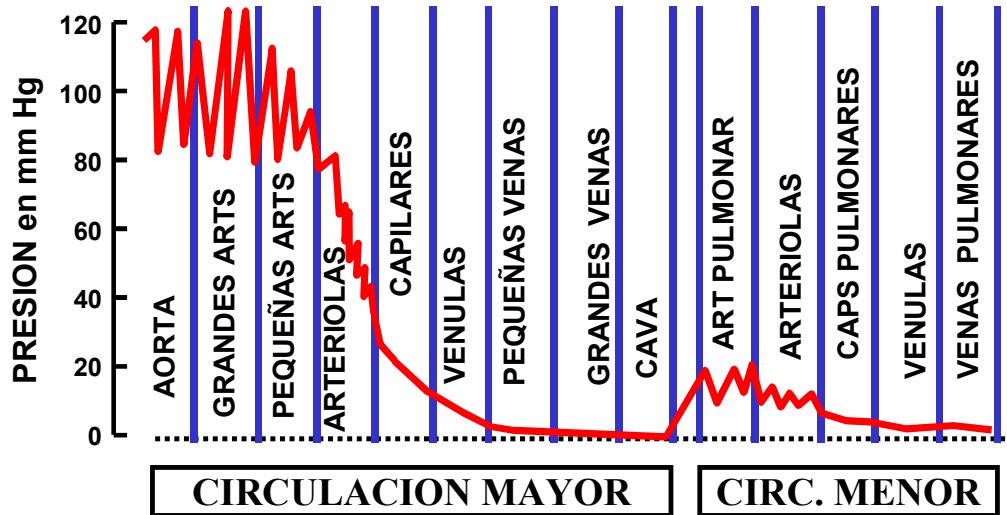


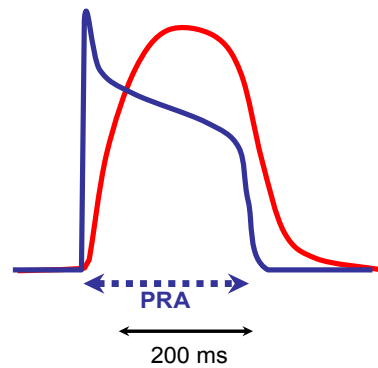
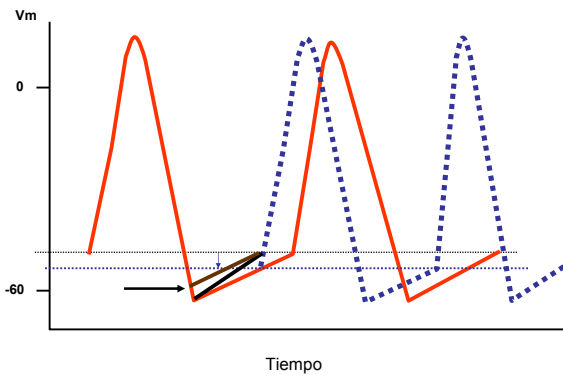
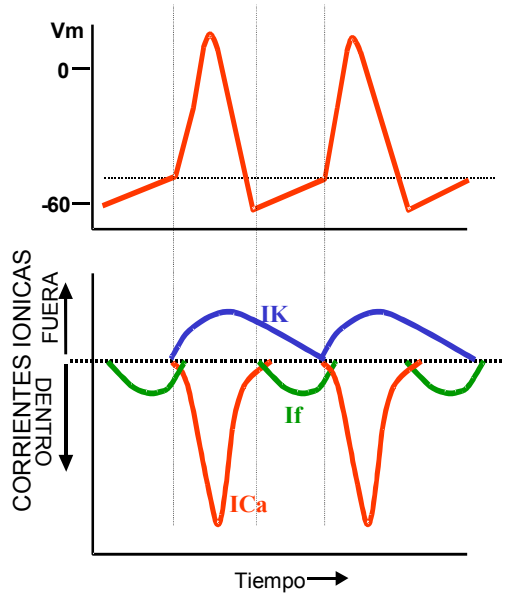
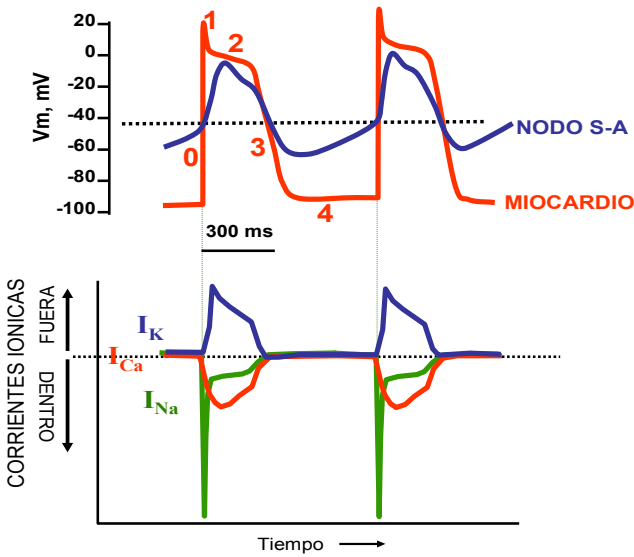
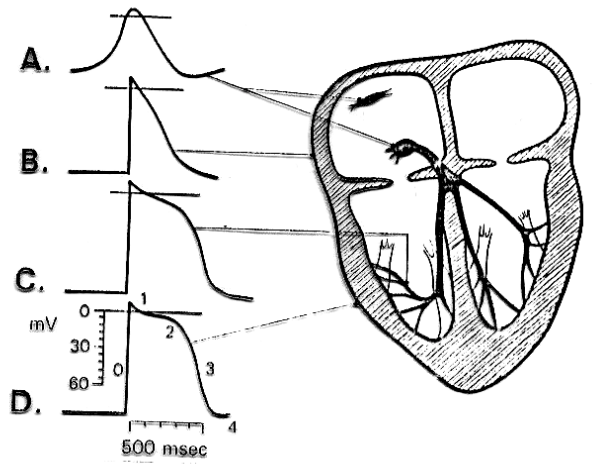
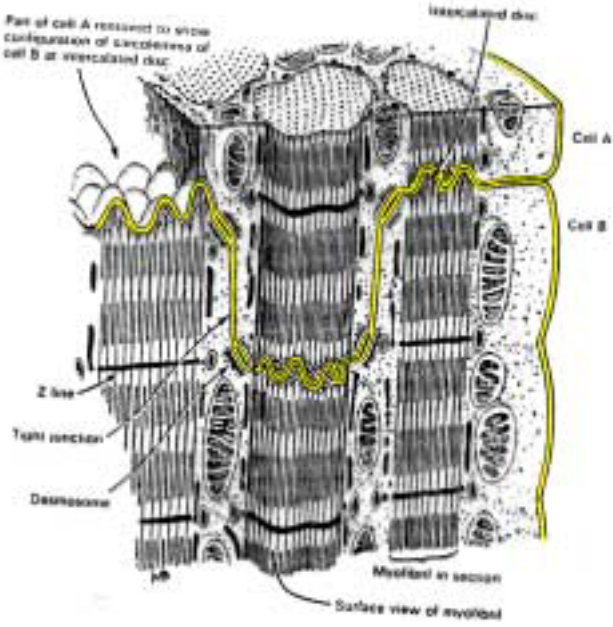
ÁREA DE SECCIÓN (cm <sup>2</sup> )	
AORTA	2,5
ARTERIOLAS	25
CAPILARES	2500
VÉNULAS	25
CAVAS	8

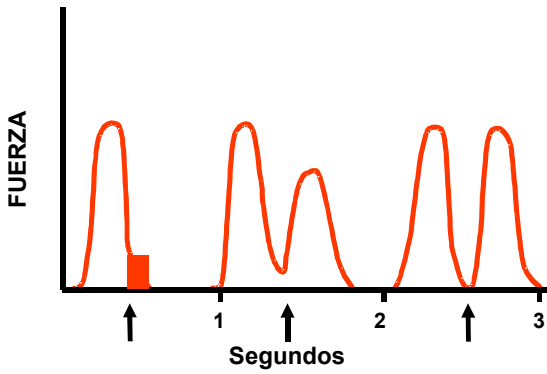
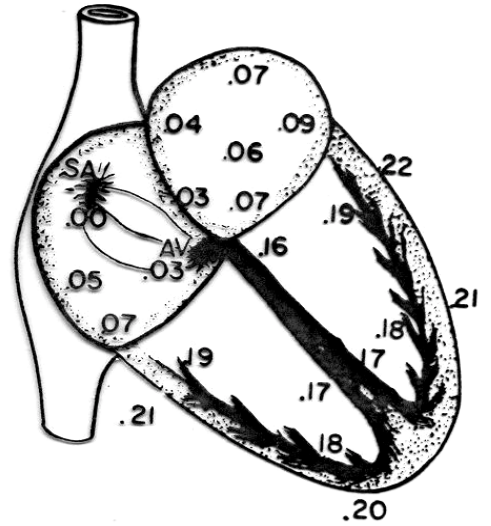
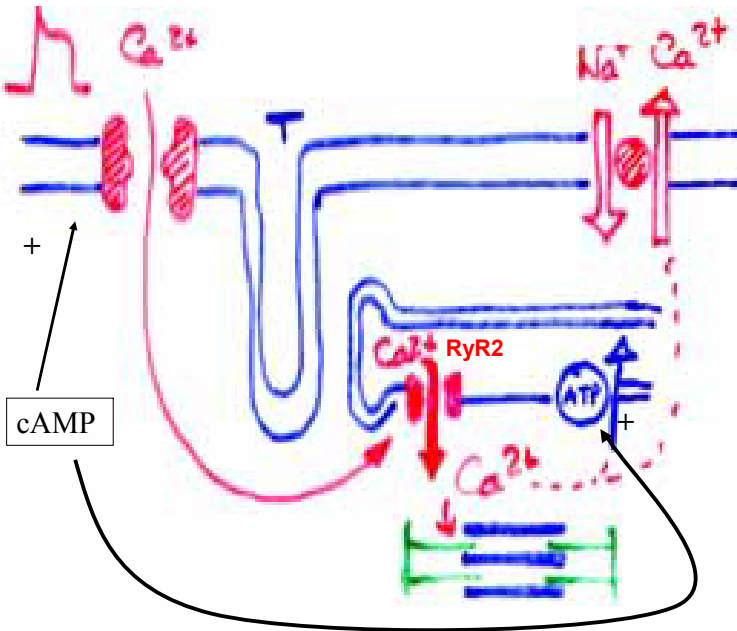
DISTRIBUCION DE VOLUMEN (%)	
VASOS PULMONARES	9
CORAZÓN	7
ARTERIAS	13
ARTERIOLAS Y CAPILARES	7
VENAS	64



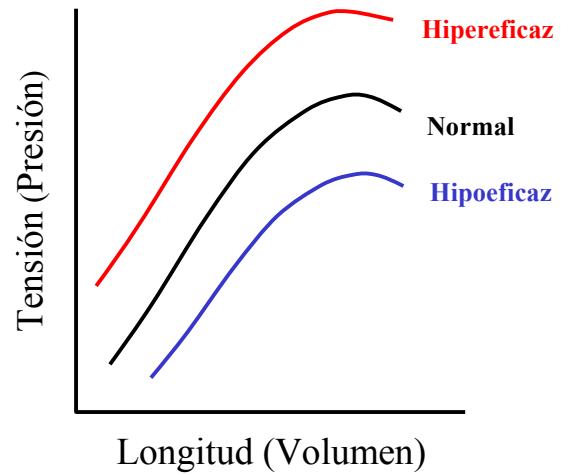
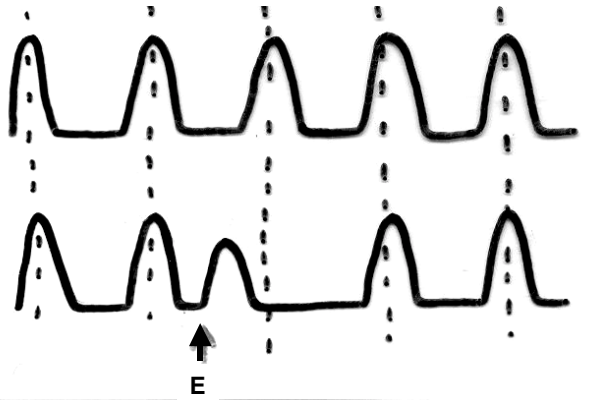
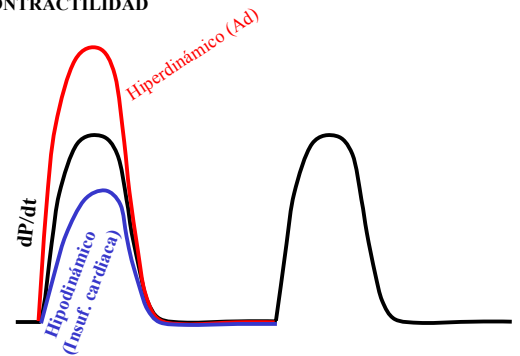
## PERFIL DE PRESIONES EN EL APARATO CIRCULATORIO



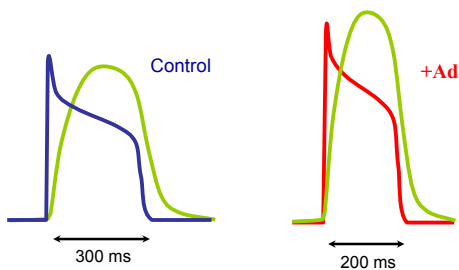


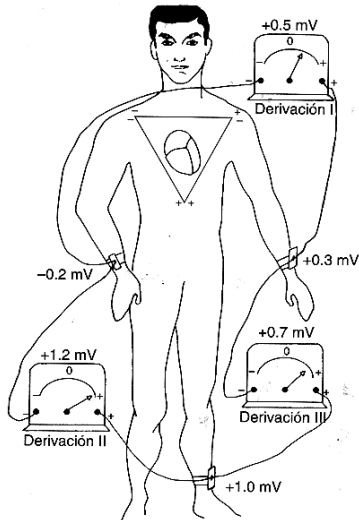
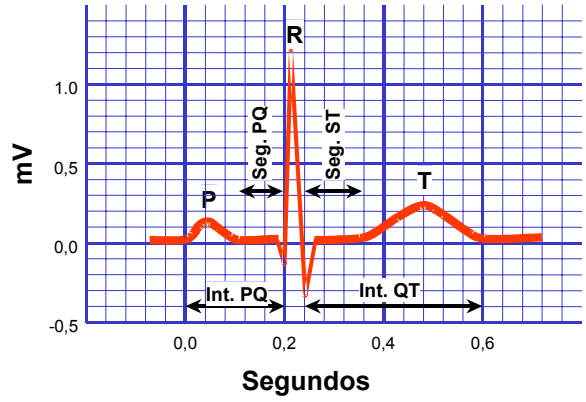
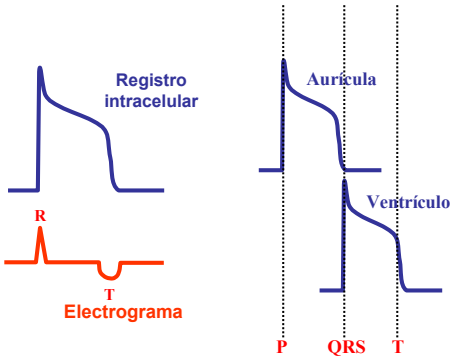
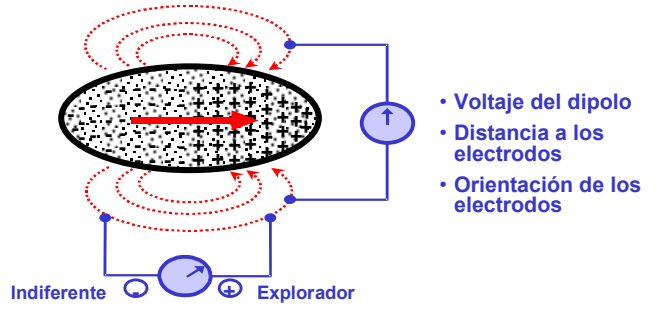
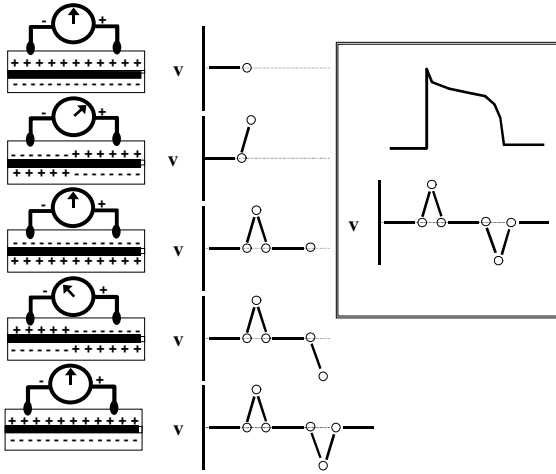


CONTRACTILIDAD

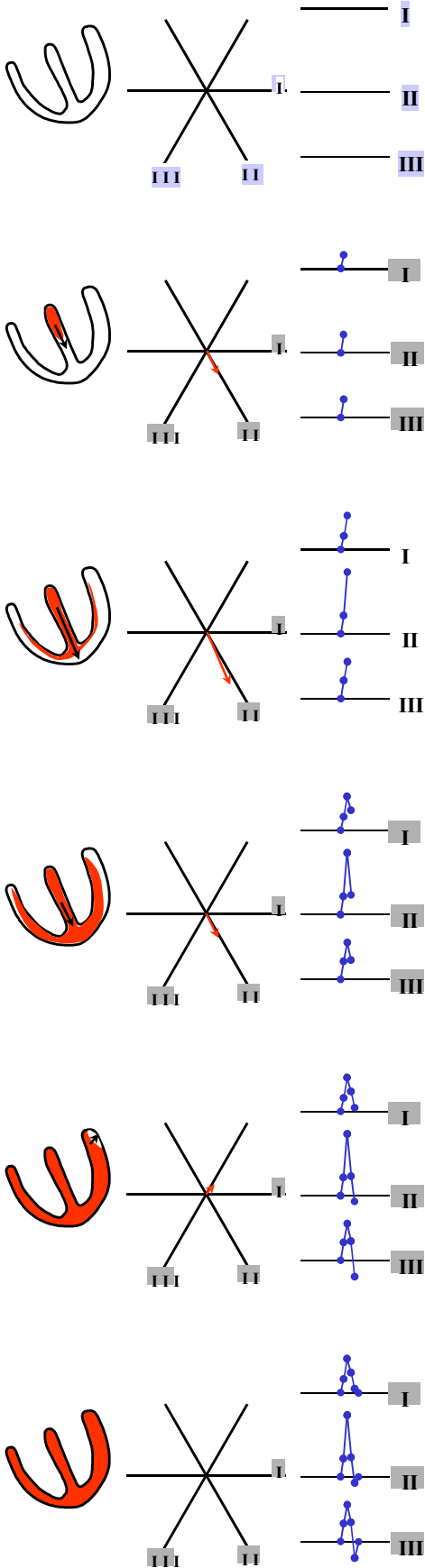


RELACION DE FRANK-STARLING

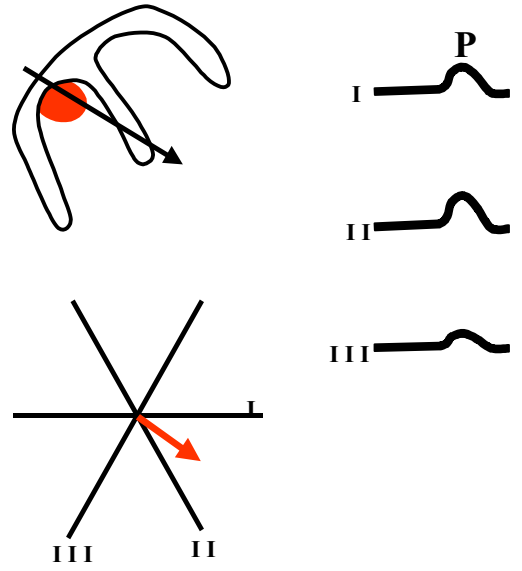




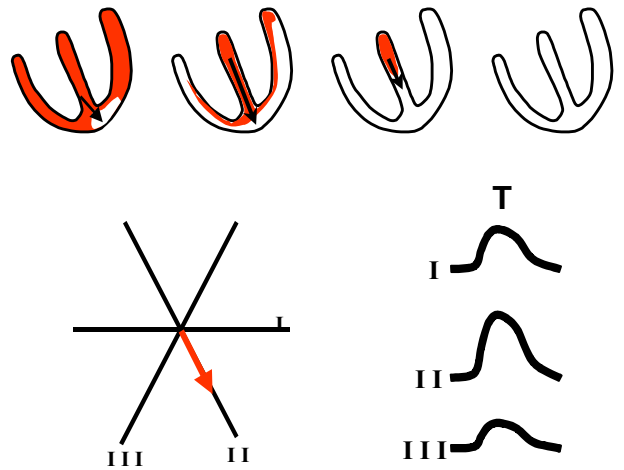
### COMPLEJO QRS

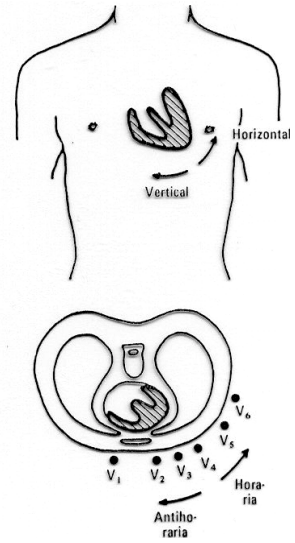
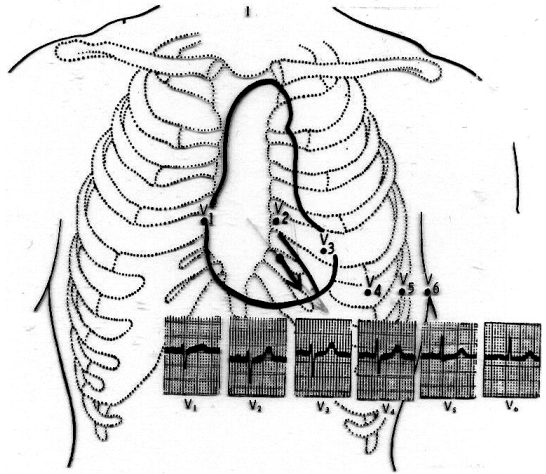
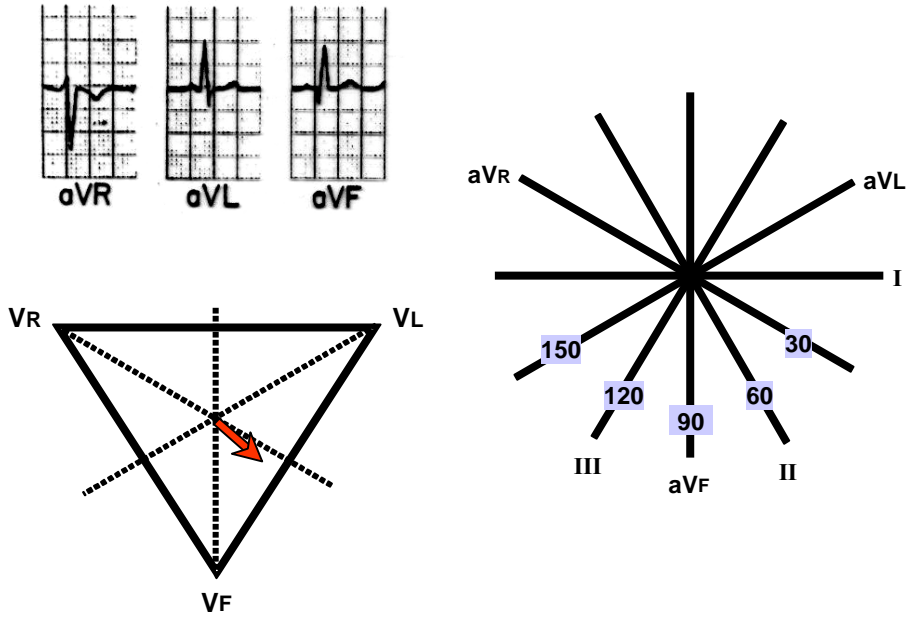


### ONDA P



### ONDA T

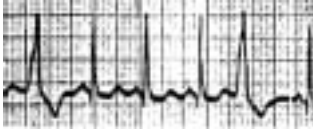




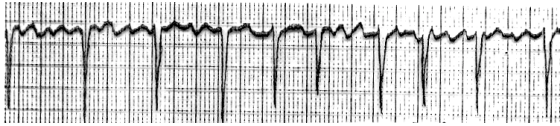
# Arritmias



Extrasístole Nodal

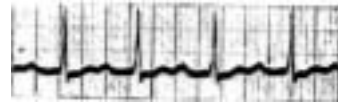


Extrasístole Ventricular



Fibrilación auricular

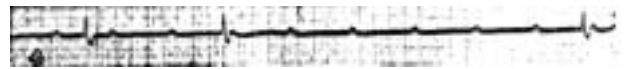
# Bloqueos



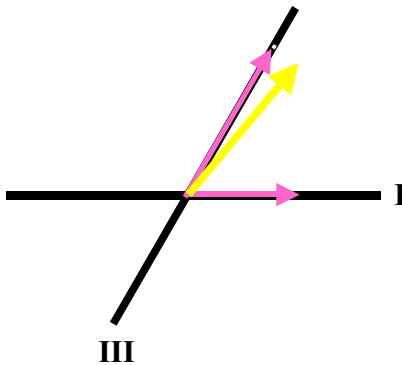
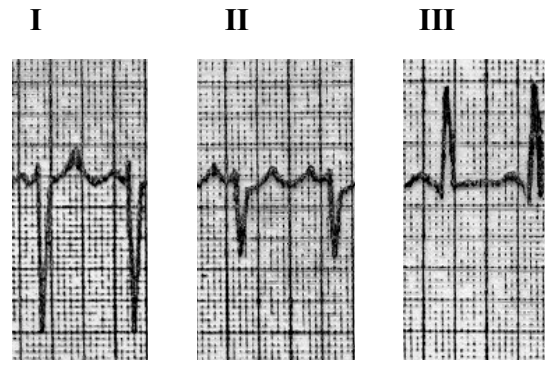
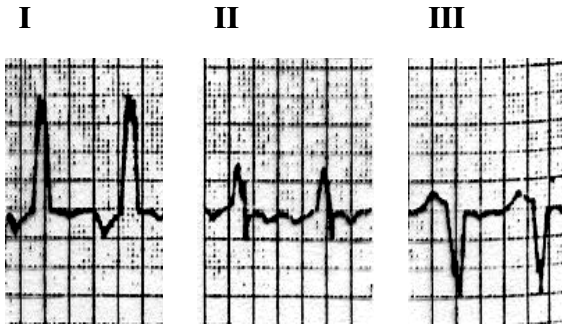
Bloqueo A-V, Grado I



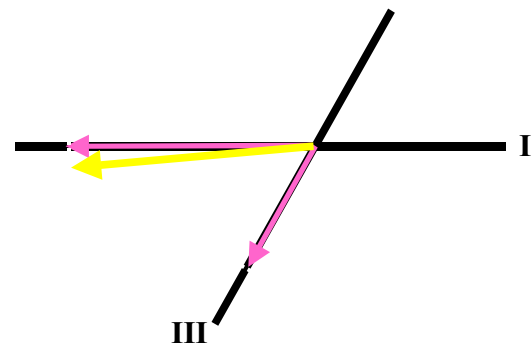
Bloqueo A-V, Grado II (2:1)



Bloqueo Atrio-Ventricular Completo

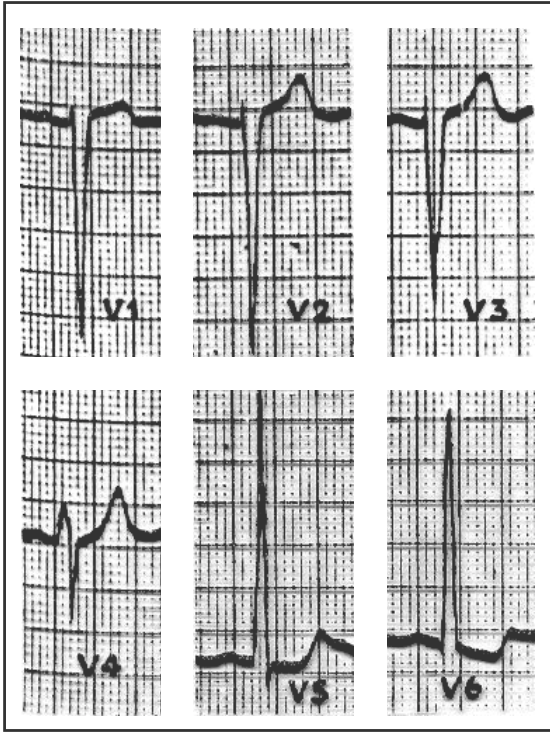


Bloqueo de rama izquierda

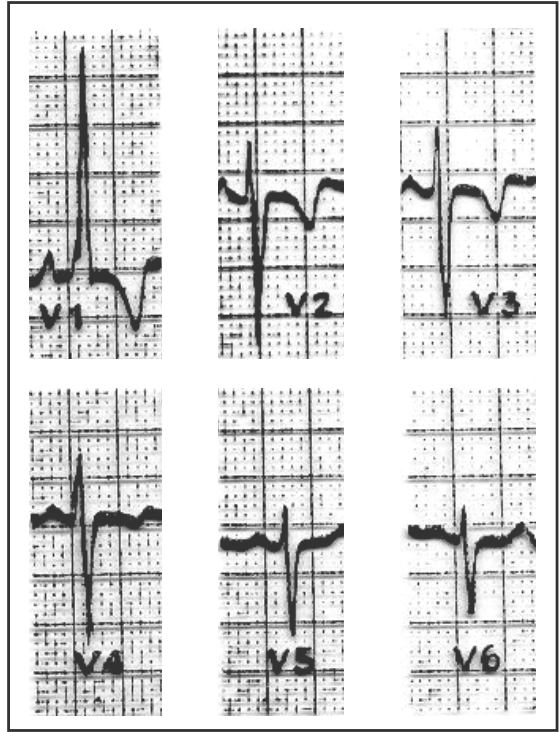


Hipertrofia ventricular derecha

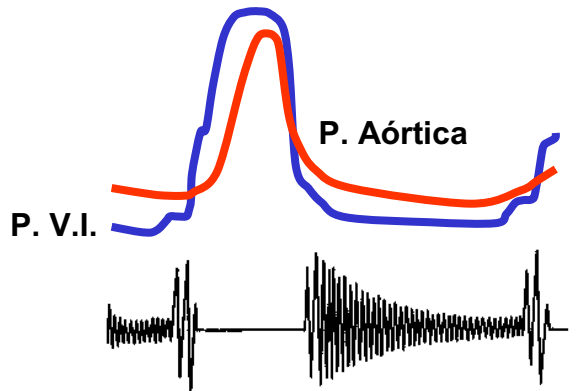
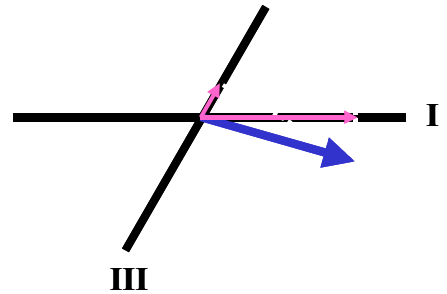
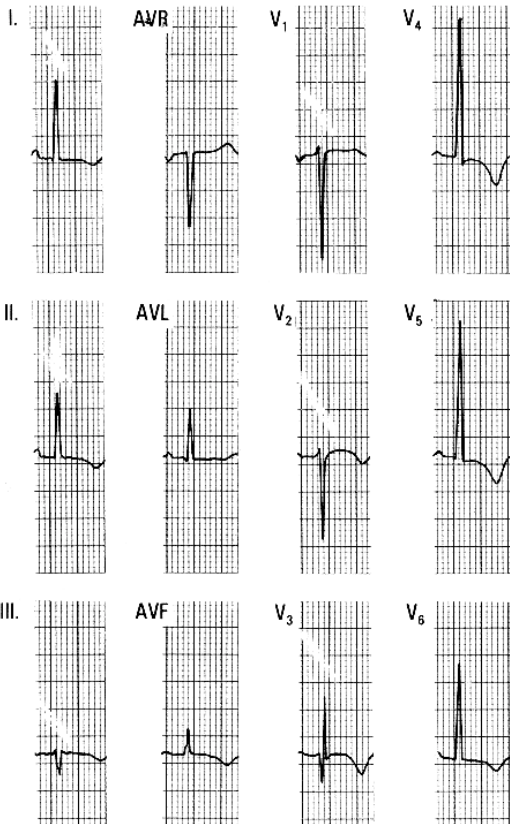




**HIPERTROFIA VENTRICULAR IZQUIERDA**

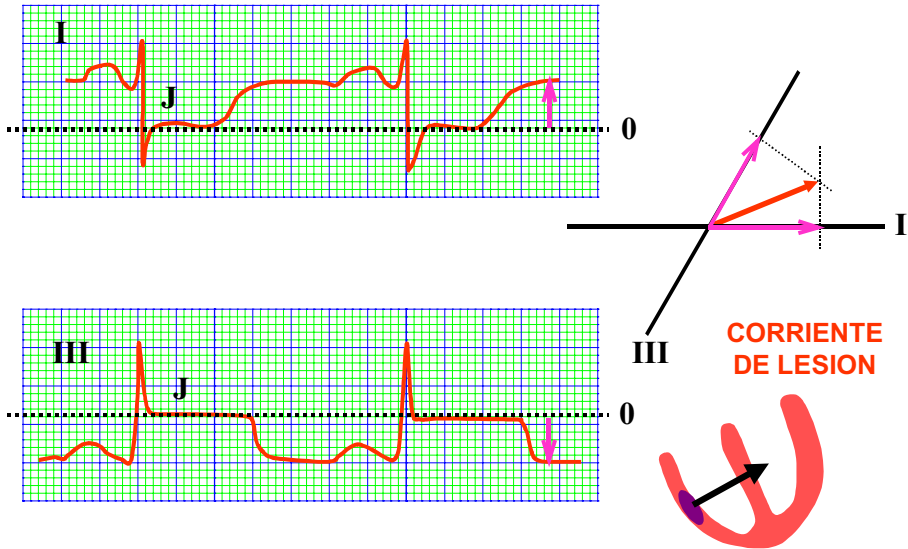


**HIPERTROFIA VENTRICULAR DERECHA**

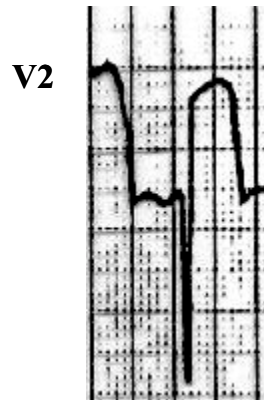
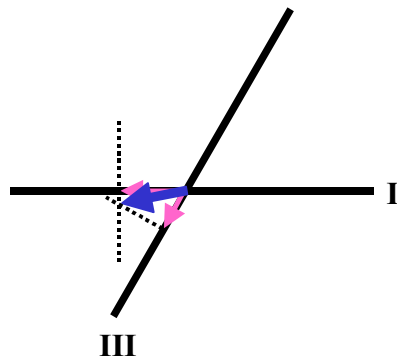
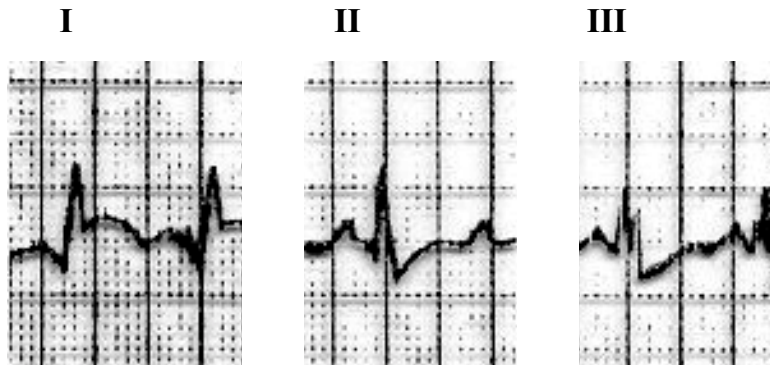


**INSUFICIENCIA AÓRTICA**





**INFARTO DE PARED LATERAL DEL VENTRICULO DERECHO**



**INFARTO DE PARED ANTERIOR**

